



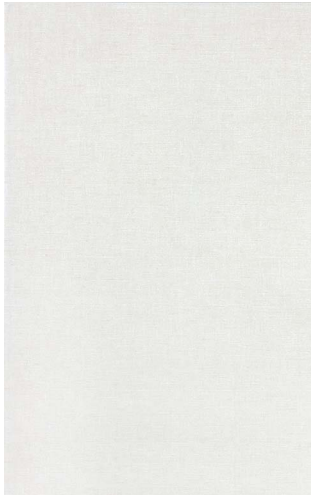
KEATON CERAMIC TILE



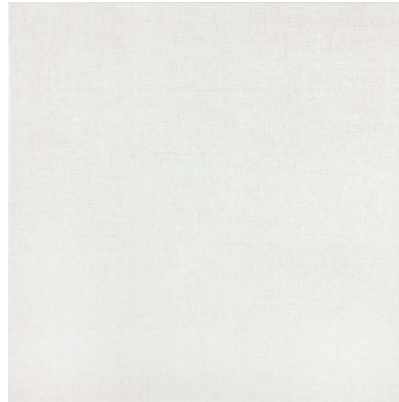
3" x 10" KEATON IVORY CERAMIC BULLNOSE
BFC310BNKIV



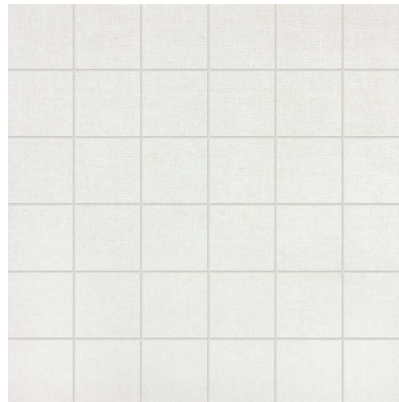
3" x 13" KEATON IVORY CERAMIC BULLNOSE
BFC313BNKIV



10" x 16" KEATON IVORY CERAMIC WALL TILE
BFC1016KIV



13" x 13" KEATON IVORY CERAMIC FLOOR TILE
BFC1313KIV



2" x 2" KEATON IVORY MOSAICS
BFC22KIV

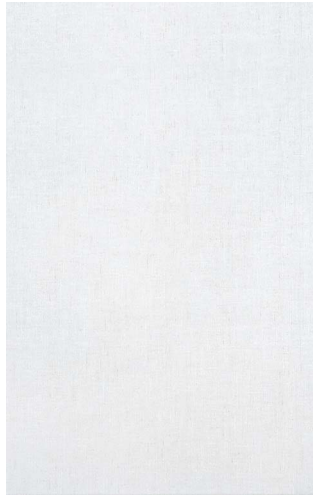
KEATON CERAMIC TILE



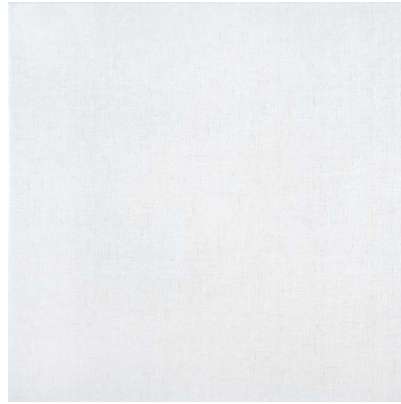
3" x 10" KEATON ICE CERAMIC BULLNOSE
BFC310BNKIC



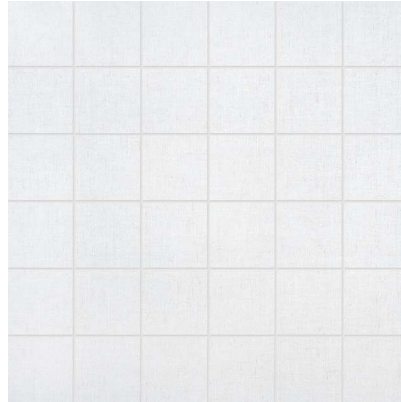
3" x 13" KEATON ICE CERAMIC BULLNOSE
BFC313BNKIC



10" x 16" KEATON ICE CERAMIC WALL TILE
BFC1016KIC



13" x 13" KEATON ICE CERAMIC FLOOR TILE
BFC1313KIC



2" x 2" KEATON ICE MOSAICS
BFC22KIC

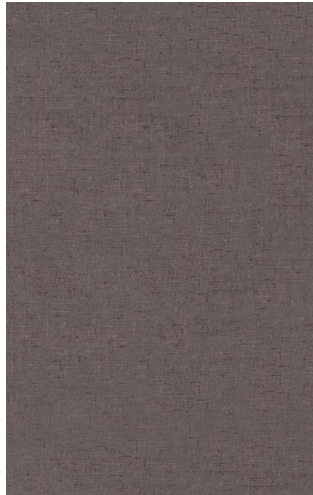
KEATON CERAMIC TILE



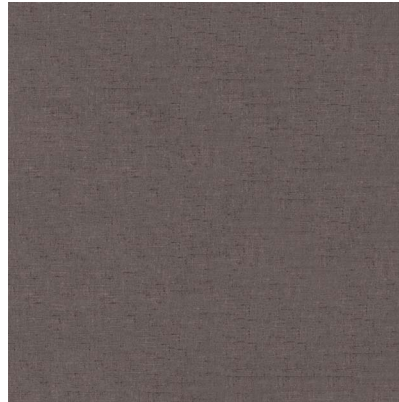
3" x 10" KEATON CARBON CERAMIC BULLNOSE
BFC310BNKC



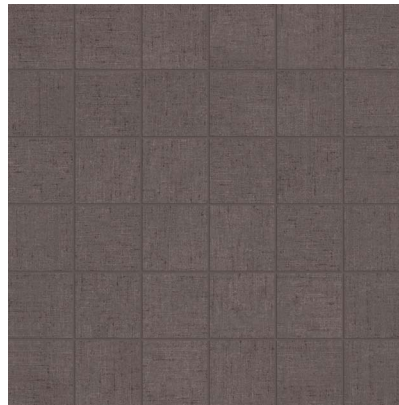
3" x 13" KEATON CARBON CERAMIC BULLNOSE
BFC313BNKC



10" x 16" KEATON CARBON CERAMIC WALL TILE
BFC1016KC



13" x 13" KEATON CARBON CERAMIC FLOOR TILE
BFC1313KC



2" x 2" KEATON CARBON MOSAICS
BFC22KC

KEATON CERAMIC TILE

PACKAGING INFORMATION

DESCRIPTION	LBS/BOX	PCS/BOX	SQFT/BOX	BOXES/SKID	SQFT/SKID
13" x 13" KEATON CERAMIC FLOOR TILE	44.01	11	12.91	58	748.90
10" x 16" KEATON CERAMIC WALL TILE	42.28	14	15.06	48	723.07
2" x 2" KEATON MOSAICS	37.00	10	11.74	48	563.52
3" x 13" KEATON CERAMIC BULLNOSE	21.00	21	n/a	84	1764 pcs.
3" x 10" KEATON CERAMIC BULLNOSE	15.00	25	n/a	98	2450 pcs.

GENERAL SPECIFICATIONS

DESCRIPTION	METHOD	UNIT	13" x 13"
THICKNESS		mm – in	7.6 mm – 5/16"
WATER ABSORPTION	EN ISO 10545-3	(%)	≤ 3
ABRASION RESISTANCE	EN ISO 10545-7	(PEI)	4
SCRATCH HARDNESS		(Mohs)	6
BREAKING STRENGTH	EN ISO 10545-4	(lbf)	≥ 250
CHEMICAL RESISTANCE	EN ISO 10545-13	(GL)	Class A – Resistant
FROST RESISTANCE	EN ISO 10545-12		Resistant
STATIC COEFFICIENT OF FRICTION (WET)	ASTM C-1028	(μ)	< 0.60
STATIC COEFFICIENT OF FRICTION (DRY)	ASTM C-1028	(μ)	≥ 0.90
DCOF (WET)	ANSI B101.3		< 0.42
SHADE VARIATION			V1